



prepared by Blackwell & Associates for the Shire of Wyndham East Kimberley
issued 28/08/2012

ANTHON'S LANDING landscape report & concept



BLACKWELL & ASSOCIATES PTY LTD

Landscape Architects • Urban Designers



table of contents

introduction.....	3	park upgrades.....	25
section 1: existing circumstances	4	vehicular circulation/parking.....	26
site plan	5	local boat access	27
indigenous recognition	6	heritage interpretation.....	28
landscape setting	7	examples of heritage interpretation.	29
heritage buildings in precinct.....	8	new surface treatments	30
heritage artefacts	9	proposed structures & furniture.....	31
historic photos.....	10	public toilet location	32
key attractors	11	section 3: landscape concept.....	33
key detractors.....	12	stage 1, landscape works	34
key views	13	stage 2, landscape works	35
lot ownership.....	14	stage 3, landscape works	36
existing vegetation.....	15	bird hide perspective	37
vehicle circulation & parking.....	16	boardwalk, toilets & lawn area perspective	38
arrival experience.....	17	landscape concept - combined.....	39
surfaces & materials.....	18	appendix	40
section 2. recommendations	19		
community workshop comments	20		
site rationalisation	21		
new tree plantings	22		
enhance existing marine couch.....	23		
foreshore options	24		



introduction

Blackwell & Associates were engaged in June 2012 to undertake a design blueprint for Anthon's Landing following the completion of the new community jetty at Wyndham.

The study was to acknowledge previous work done to date on upgrading the foreshore area and yet take a fresh look at the enhancement options for the precinct. With the support of Coastwest funding as well as the Shire, a staged landscape concept for enhancing the foreshore area has been completed.

Blackwell and Associates have met with and have been guided by the Anthon's Landing Jetty Community Group in ensuring that:

- work done and ideas proposed to date are taken into account
- key local people/ stakeholders have been consulted
- residents with Lots along the foreshore area have been involved
- key community groups including Balangarra, Wyndham Tourism Group, Wyndham Heritage Society, RSL, Marine Rescue, Wyndham District High School and others have been consulted.

Blackwell and Associates met the Community Group and undertook site investigations and design workshop in early July. The Consultants were particularly impressed with the setting of the site and indeed with the immediate heritage precinct. From the outset it was clear that the precinct whilst clearly composed of a foreshore zone and a built 'heritage' settlement, and should be considered very much as a whole for the purposes of the study and for all future works.

Further to meetings with council officers sketch plans were drawn up based upon the site design sessions. The consultants then refined these proposals further to meetings and discussions with a wide range of interested parties including:

- The Heritage Council
- Tourism WA
- True North
- Department of Transport

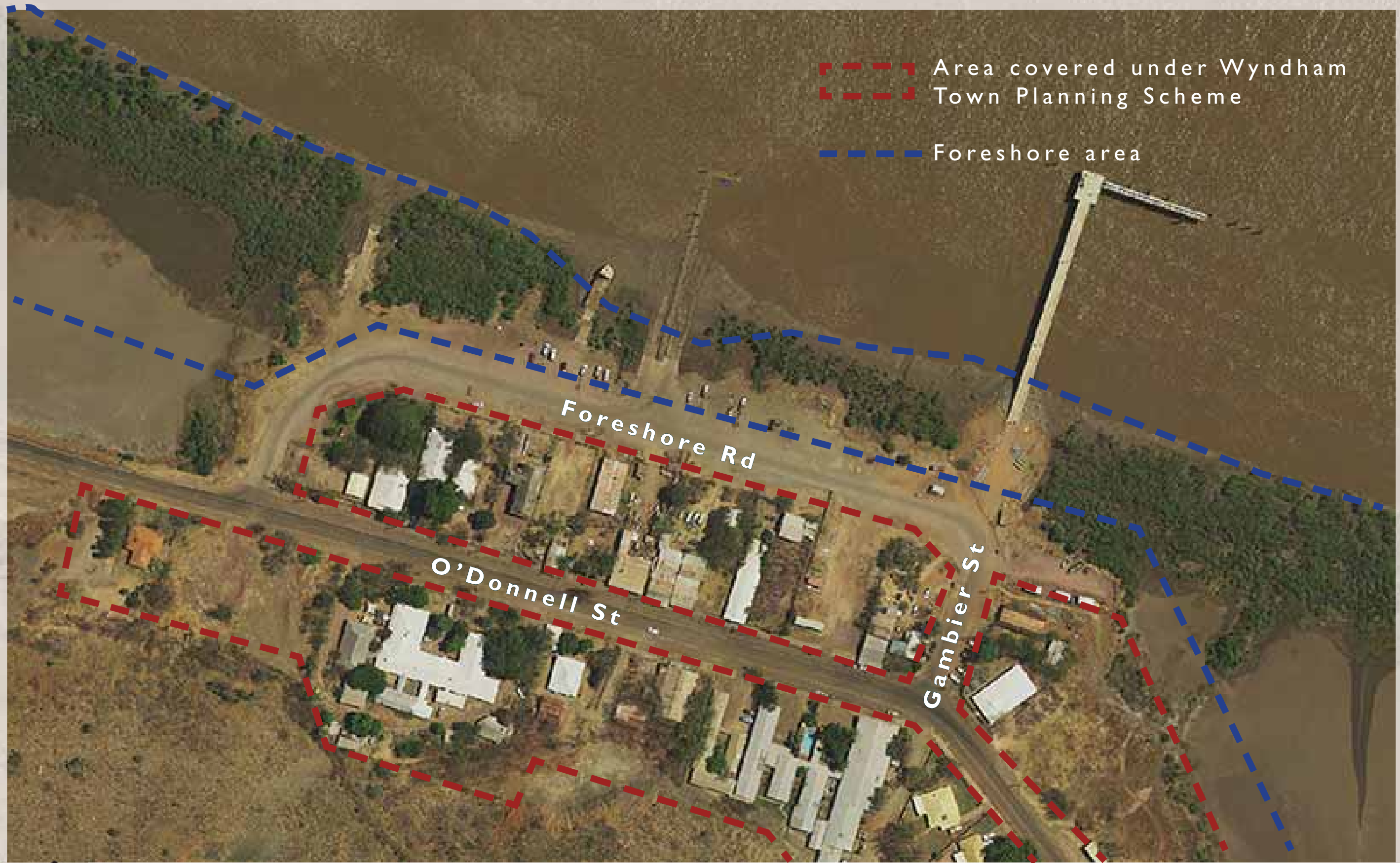
The final proposals were presented to both a public forum and again to the Community Group on August 21st and 22nd 2012. The following is the site analysis undertaken by Blackwell and Associates, the individual components of their recommendations and finally, the landscape concept, as broken into three stages of works.



section 1: existing circumstances



site plan



ANTHON'S LANDING-EXISTING CIRCUMSTANCES

BLACKWELL & ASSOCIATES PTY LTD

Landscape Architects • Urban Designers



indigenous recognition

Most important natural and cultural values from the Traditional Owners, the Balangarra

Balangarra Law and Culture

Significant Cultural Sites

Saltwater Fish and Seafood

Freshwater

Native Animals

Bushtucker/Medicine Plants

Migratory Saltwater Animals (Turtle, Dugong, Dolphins, Whales)

Right way fire



landscape setting

Anthon's Landing sits amid a world class landscape setting in the East Kimberley, adjacent by the Bastion Lookout and the Cambridge Gulf.



Bastion Lookout



Cambridge Gulf



heritage buildings in precinct

Buildings entered on the Municipal Heritage Inventory
(<http://register.heritage.wa.gov.au>)

- Bluey Lloyd's House & Flat
- Drivers Memorial
- Fong Fan's Shop
- Gee Hong Yet Store & Residence
- Grandison's Store
- Honest Johns
- O'Donnell Street Precinct
- Old Wyndham Court House (fmr)
- Postmaster's Residence
- 1954 North Kimberley Survey & Mapping Expedition Plaque
- Wiley & Lee Tong Store and Residence
- Wyndham Port Regional Prison (Wyndham Port Hospital)
- Wyndham Port Shire Hall
- Wyndham Post Office (fmr)
- Wyndham RSL War Memorial at RSL Memorial Park



ANTHON'S LANDING-EXISTING CIRCUMSTANCES

BLACKWELL & ASSOCIATES PTY LTD

Landscape Architects • Urban Designers



heritage artefacts

Items found off site



Koolama wreck (remanants seen at very low tide)

photo from State Library of WA collection (<http://www.slwa.wa.gov.au>)



meatworks fly wheel



train carriages at port



anchor at port

Items found on site



RSL artefacts including wheels, guns & memorial



remnants of cattle race



pilings from old jetty



historic photos



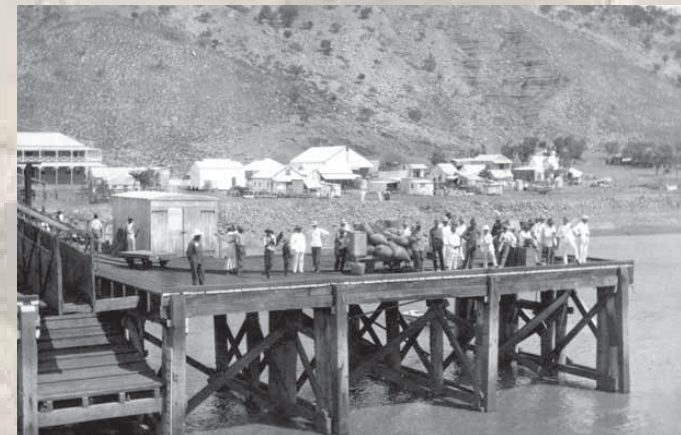
ca. 1920 Wyndham



ca. 1920-30 Anthon's Landing



1947 Wyndham Hotel



ca. 1920-30 Wyndham Jetty



1917 Crocodile

Above photos sourced from State Library of WA collection (<http://www.slwa.wa.gov.au>)



key attractors



crocodiles

photo from State Library of WA collection (<http://www.slwa.wa.gov.au>)



barge & landing



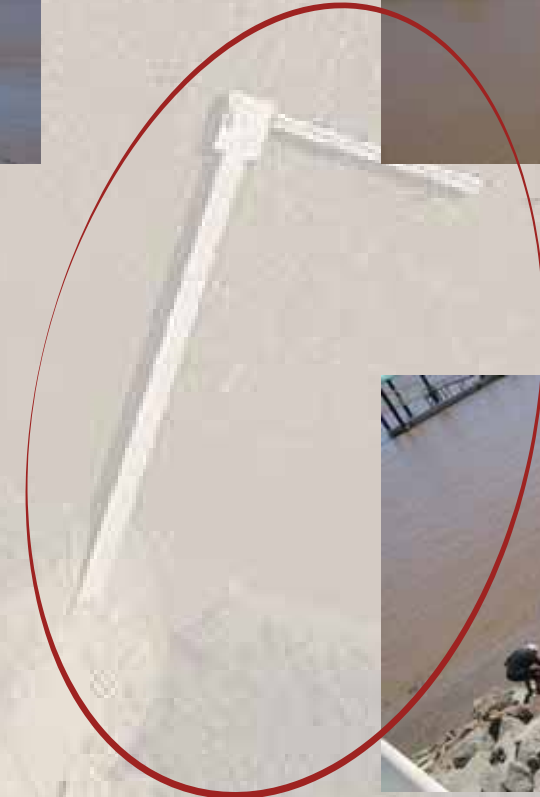
pontoon & boat ramp



jetty



Bessie Wiley Park



fishing



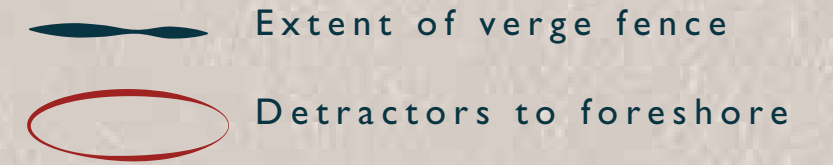
heritage buildings



museum



key detractors



rubbish bins



rubbish & building waste



pontoon signage



confused access to boat ramps



road trains



toilet building



fencing to open spaces & buildings along verges



lack of shade & seating



key views



views to salt lake



views to the gulf from the foreshore & jetty



views inland

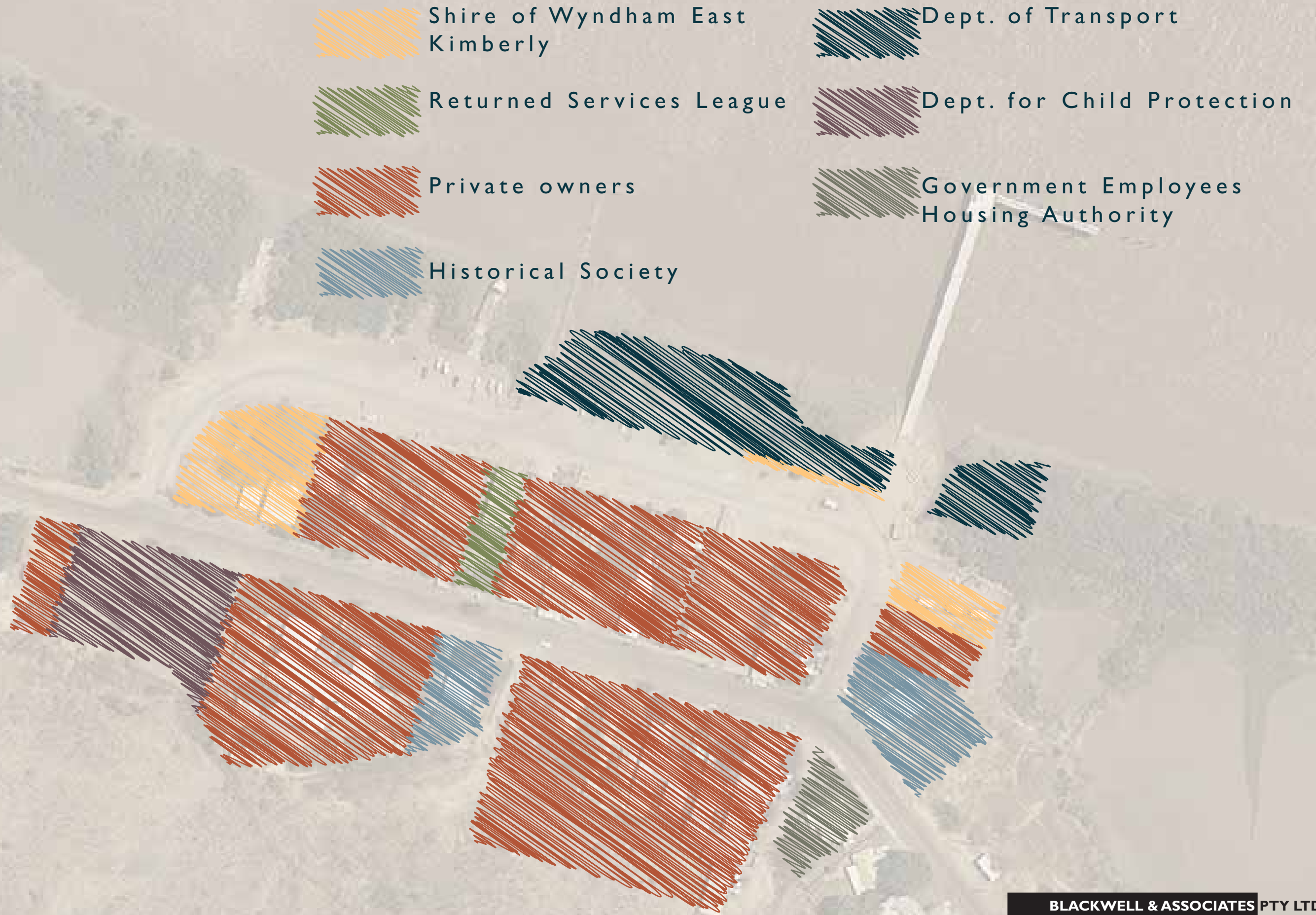


views to the bastion



ANTHON'S LANDING-EXISTING CIRCUMSTANCES

lot ownership



ANTHON'S LANDING-EXISTING CIRCUMSTANCES

existing vegetation



shade trees to the park



mangroves to the foreshore



street trees include boabs, frangipanis & figs



trees in private lots



vehicle circulation & parking

↔ circulation

▨ parking



road trains to O'Donnell St



parking to Foreshore Road



Foreshore Road



O'Donnell Street

to Wyndham town

to Wyndham port



ANTHON'S LANDING-EXISTING CIRCUMSTANCES

BLACKWELL & ASSOCIATES PTY LTD

Landscape Architects • Urban Designers



arrival experience

The site generally lacks a sense of arrival, with little to highlight the significance of this area



arrival from O'Donnell Street, south



arrival from jetty



arrival from O'Donnell Street, north



surfaces & materials



bitumen spray & aggregate



interlocking concrete brick paving - is subject to extreme inundation yet has performed well



compacted gravel



pre-fabricated concrete



local stone



FRP panels



section 2. recommendations



community workshop comments

(21/06/2012)



site rationalisation

 Recommended removal/
upgrade of fencing

 Item recommended for
removal



remove skip bins, rubbish & signage from foreshore & install new furniture & signage that is integrated with overall site aesthetic



rationalise fencing



remove & relocate toilet facilities



new tree plantings

“Beautify the foreshore with more trees”

“Preserve mangrove shoreline and grass the area behind”

“Get rid of mangroves”

“Compromise? What about keeping and making a window between the mangroves so you can get a view of the gulf”

 Salt tolerant tree plantings

 Shade tree plantings

 mangrove rehabilitation



enhance existing marine couch

“Grass, more seats/tables and trees”

“Grassy picnic areas”

“Parkland, BBQs, interpretive signs fish and bird ID”

“Preserve mangrove shoreline and grass the area behind”

 existing lawn to Bessie Wiley Park

 extend lawn at Bessie Wiley Park to meet Foreshore Road

 option 1: enhance existing marine couch
option 2: mangrove regeneration

Advantages of additional lawn:

- provides a ‘natural’ comfortable seating & picnic space
- provides a good play & kickabout space
- cooler than pavement
- looks aesthetically attractive
- addresses community wishes

Disadvantages of additional lawn:

- ongoing maintenance from mowing & irrigation
- high water requirements during dry months
- a salt tolerant species will be required to cope with high tides & flooding
- requires a sea wall



foreshore options



option 1: enhance existing marine couch



option 2: mangrove regeneration



ANTHON'S LANDING-LANDSCAPE CONCEPT

BLACKWELL & ASSOCIATES PTY LTD


Landscape Architects • Urban Designers



park upgrades

“Upgrade Bessie Wiley park or a BBQ and playground equipment”

“Grassy picnic areas BBQs like at lookout”

 Upgrade to Bessie Wiley park with additional playground equipment, picnic furniture, shade & extension of park onto verge

 Enhancement to RSL Memorial Park (currently underway by local not-for-profit work crew)

 Redesign fence to provide more attractive & welcoming entrance to RSL Memorial Park



vehicular circulation/parking

“Parking for boats and trailers, sealed painted lines”

“Tidy parking area”

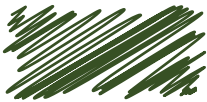
“Good parking”

↔ bus circulation

↔ vehicular circulation

↔ emergency access

 parking (cars only)

 parking (boats & cars)

 Shire approved commercial vendor parking

 bus parking/drop off

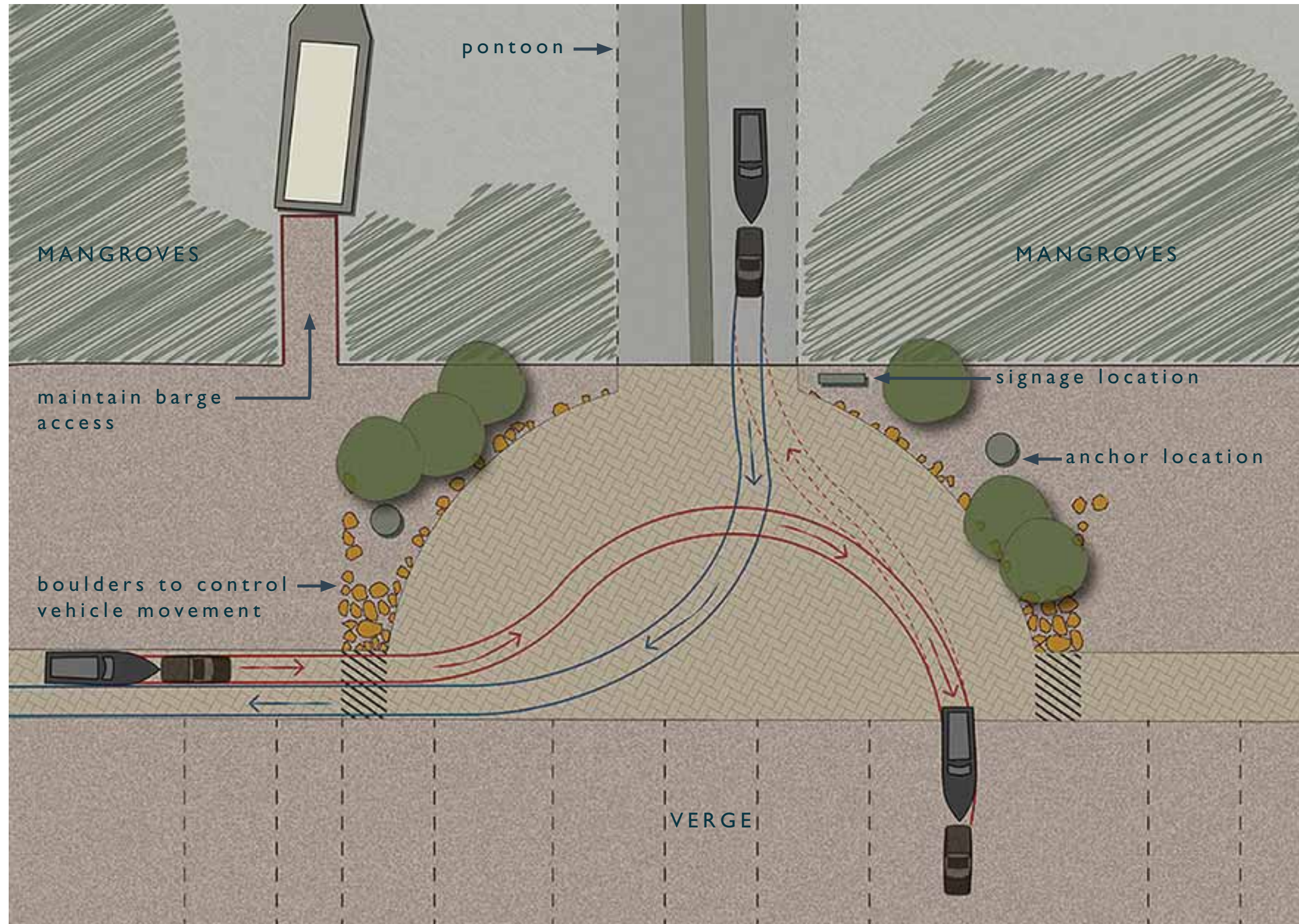
 local boat access area (no parking)

Existing parking & vehicular circulation is maintained but shall subtly controlled & defined.

Road trains are a necessary part of the area however they should be prevented from accessing foreshore road.



local boat access



heritage interpretation

“know history of cattle races”

“signage on the history of Anthon’s Landing”

“identification plaques for sea birds & fish”

↔ heritage circuit with interpretative signage

↔ signage to link the foreshore with other heritage artefacts off site

○ artefact



relocate anchor as entry marker to pontoon



interpretation of cattle race & retain artefact



proposed fly wheel location, based on community designs



signage to link rail artefacts with foreshore



examples of heritage interpretation



Perry Lakes



Nara Inlet



Ballast Point



Nara Inlet



Ballast Point



Ballast Point



new surface treatments

 repair existing concrete footpath

 new concrete footpath

 town to foreshore path upgrade

 concrete unit paving (match existing)

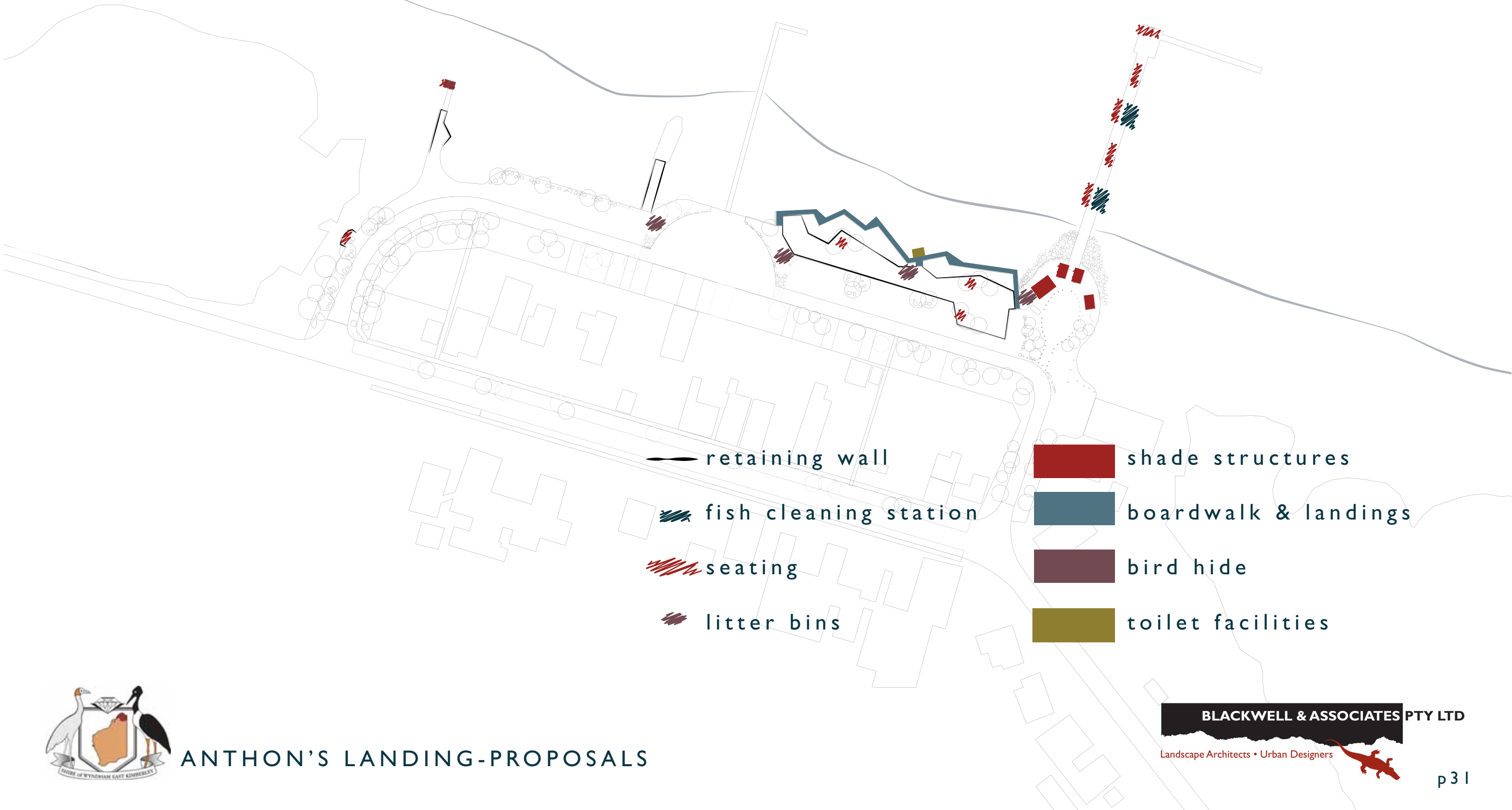
 grate cover to drain (possible public access)



proposed structures & furniture

“Develop a boardwalk for people (no cars) with stories along the boardwalk on birds and plants”

“Retaining wall along parts of foreshore for people (similar to Bastion)”



public toilet location

"New toilet facilities"

"Address the sewerage issue flowing through foreshore blocks and disposing into gulf system"

"A loo with a view"



local composting toilet examples

Proposed composting toilet.
This location is easily accessed from all key nodes on the site with the possibility for a custom design that will provide a view across the gulf to make this a feature of the site, rather than just an amenity.



section 3: landscape concept

The following landscape proposals are a culmination of site analysis, community input and intensive design. Some of these identified proposals will require budgetary planning and other elements can be undertaken immediately with minimal cost. The Shire believes that it will need to plan for a 5 year period with various agencies being approached for funding support to leverage off any budget the Shire will allocate. As such, the landscape concepts have been prepared to allow works to proceed over three distinct stages. The consultants explained the nature of the proposed staging and how it has been designed in order to complete discrete areas of work rather than undertake the trade sections in stages ie completing all of the paving within the precinct at once.

Further funding for aspects of the proposed work has already been submitted to Coastwest and visits to the site are expected in September from Heritage WA given the historical importance of the site.

The key aspects of each stage are as follows:

STAGE ONE

The precinct lacks a sense of arrival, for visitors arriving via the Highway as well as for those arriving via the Gulf, from both the jetty and pontoon. As such, the entrances to the precinct were deemed as the most critical for stage one upgrades.

Large shade trees and a maritime artwork are proposed to mark the main vehicular entrance to Foreshore Road. Shade trees are also proposed for the entrance from Gambier Street, which when combined with the Foreshore Road entrance, will frame and define the precinct.

The new jetty is another key entry point to the site, in particular for visitors arriving via cruise ships. As such, it is proposed that large shade structures and trees will create a focal point at the jetty. Seating beneath the shade structures will provide comfortable resting points for visitors and locals alike. It is proposed that this space remains open to pedestrians only, with maritime style bollards controlling vehicle access.

It is proposed that the third entry point, the local boat launch facility, is reshaped to better handle the considerable growing numbers of boat and vehicle traffic that the site has experienced in recent years. The new shape of the boat launch area is a direct result of community input, with this space being defined with local boulders and salt tolerant shade trees.

STAGE TWO

The community expressed a desire for a boardwalk and some grassed areas to be installed along the foreshore. Being a high cost item, the boardwalk has been nominated for construction in stage two works, when a more significant amount of funding has been allocated to the project. The boardwalk links the new jetty and pontoon area and will incorporate a new toilet facility. Signage about local flora, fauna and stories of the Wyndham area and will also be included on the boardwalk.

It is recognised that parking can be in short supply along the foreshore during peak periods, and as such it is proposed that long term trailer parking is provided to the southern end of the site. This will free up parking elsewhere along Foreshore Road, with parking spaces subtly controlled through the placement of local boulders and a low retaining wall to the grassed area.

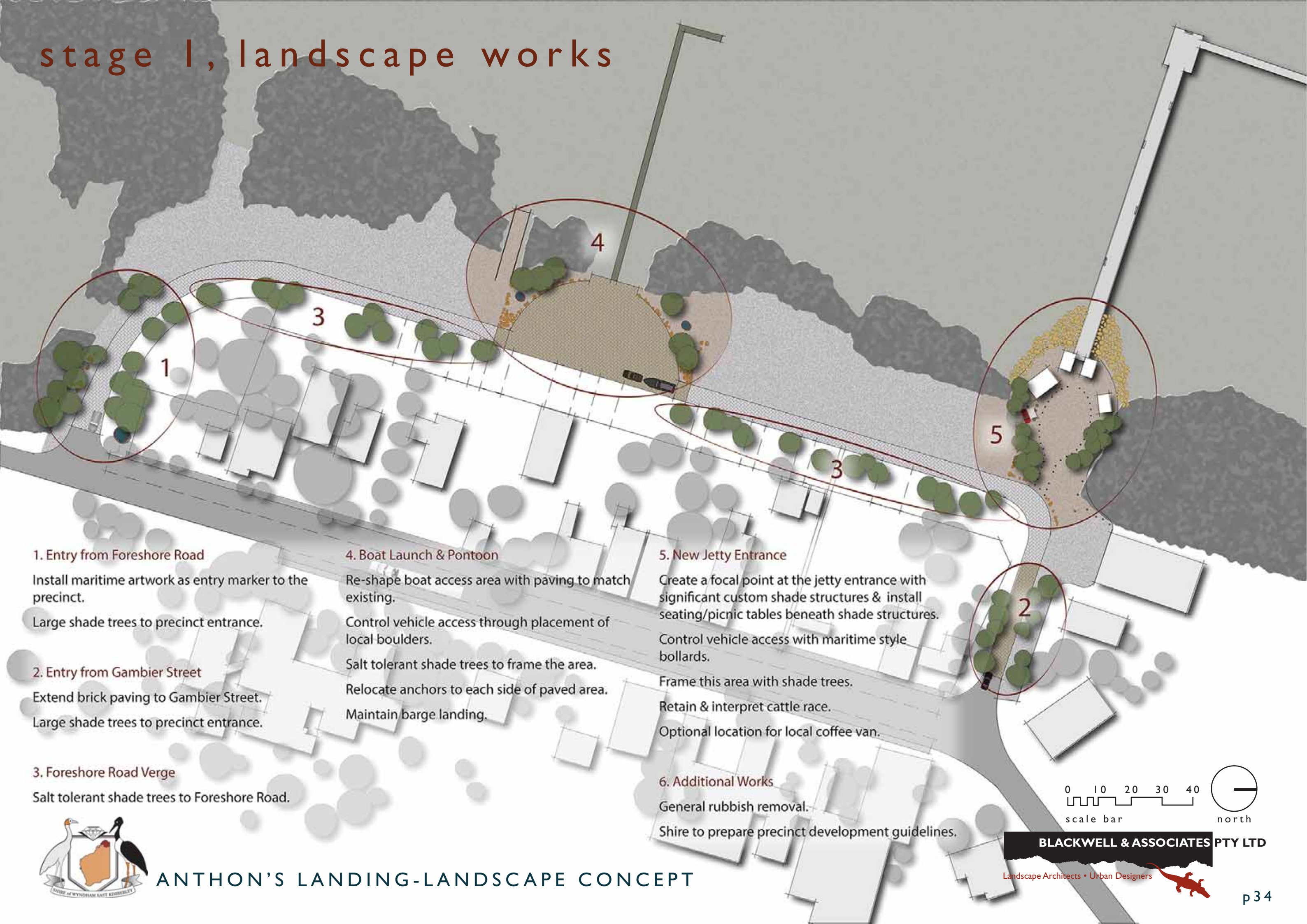
STAGE THREE

The stage three works complete the improvements to the precinct, and these that extend beyond the foreshore area. This stage will see the link between Foreshore Road and O'Donnell Street strengthened with pedestrian access ways through Bessie Wiley Park, the drainage channel and possibly through the memorial lot.

Other stage three improvements include a structure to facilitate bird and crocodile viewing, upgrades to the Bessie Wiley Park as well as the installation of shade trees and interpretive signage to O'Donnell Street.



stage 1, landscape works



1. Entry from Foreshore Road

Install maritime artwork as entry marker to the precinct.

Large shade trees to precinct entrance.

2. Entry from Gambier Street

Extend brick paving to Gambier Street.

Large shade trees to precinct entrance.

3. Foreshore Road Verge

Salt tolerant shade trees to Foreshore Road.

4. Boat Launch & Pontoon

Re-shape boat access area with paving to match existing.

Control vehicle access through placement of local boulders.

Salt tolerant shade trees to frame the area.

Relocate anchors to each side of paved area.

Maintain barge landing.

5. New Jetty Entrance

Create a focal point at the jetty entrance with significant custom shade structures & install seating/picnic tables beneath shade structures.

Control vehicle access with maritime style bollards.

Frame this area with shade trees.

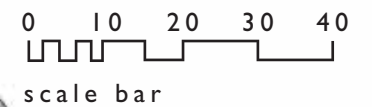
Retain & interpret cattle race.

Optional location for local coffee van.

6. Additional Works

General rubbish removal.

Shire to prepare precinct development guidelines.



stage 2, landscape works

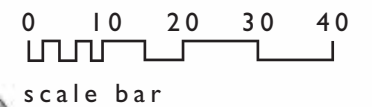


1. Long Term Boat & Trailer Parking
 Access point to future long term trailer parking.

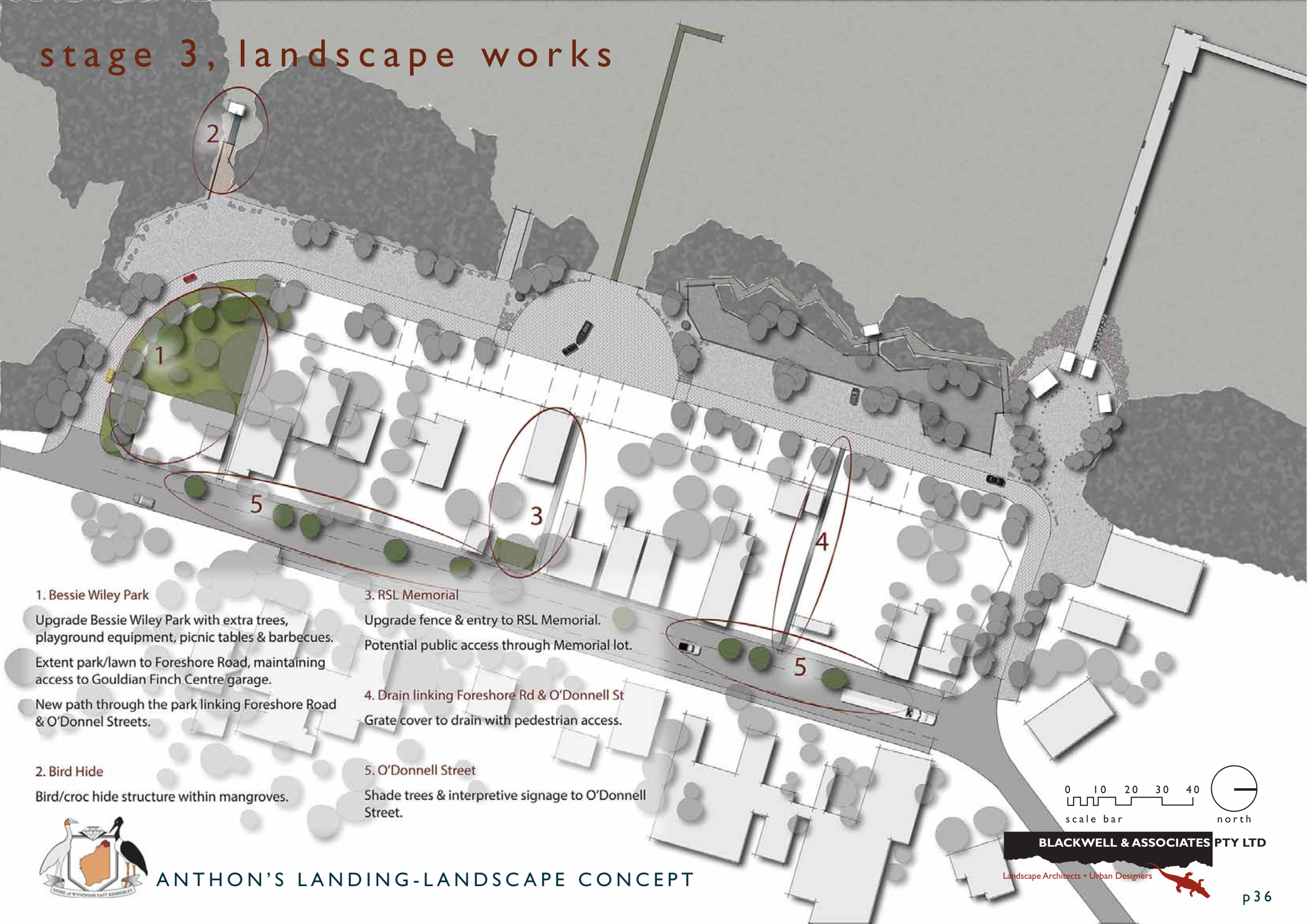
2. Short Term Boat & Trailer Parking
 Rationalise gravel parking to 15m width.
 Install boulders to control & define parking.
 Revegetate mangroves to carpark edge.

3. Jetty
 Install seats & fish cleaning tables to jetty.

4. Northern carpark, boardwalk & picnic area
 Boardwalk through the mangroves, linking the new jetty with local pontoon.
 Interpretive signage to boardwalk with information about local flora, fauna and stories of the Wyndham area (such as the story of the Koolama wreck).
 Replace existing toilet building with new composting toilets, located amongst the mangroves to provide views across the Gulf.
 Upgrade existing marine couch & install low wall to raise & protect couch. Include picnic tables & shade trees to couch.
 Rationalise gravel parking to 15m width & bus parking to northern end (adjacent the lawn area).



stage 3, landscape works



1. Bessie Wiley Park

Upgrade Bessie Wiley Park with extra trees, playground equipment, picnic tables & barbecues.

Extent park/lawn to Foreshore Road, maintaining access to Gouldian Finch Centre garage.

New path through the park linking Foreshore Road & O'Donnell Streets.

3. RSL Memorial

Upgrade fence & entry to RSL Memorial.

Potential public access through Memorial lot.

4. Drain linking Foreshore Rd & O'Donnell St

Grate cover to drain with pedestrian access.

2. Bird Hide

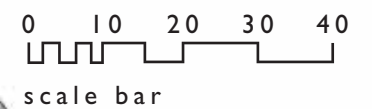
Bird/croc hide structure within mangroves.

5. O'Donnell Street

Shade trees & interpretive signage to O'Donnell Street.



ANTHON'S LANDING-LANDSCAPE CONCEPT

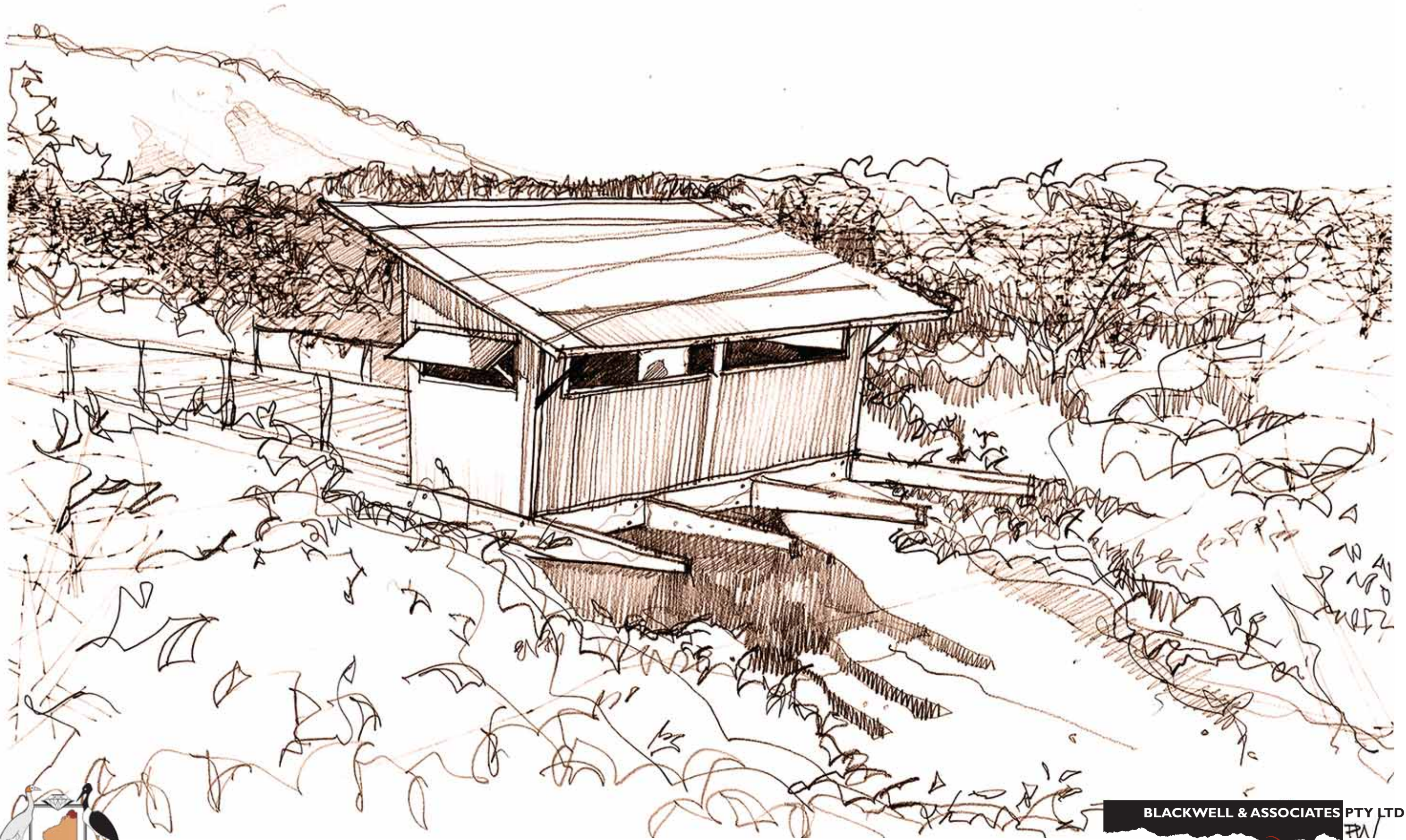


BLACKWELL & ASSOCIATES PTY LTD

Landscape Architects • Urban Designers



bird hide perspective



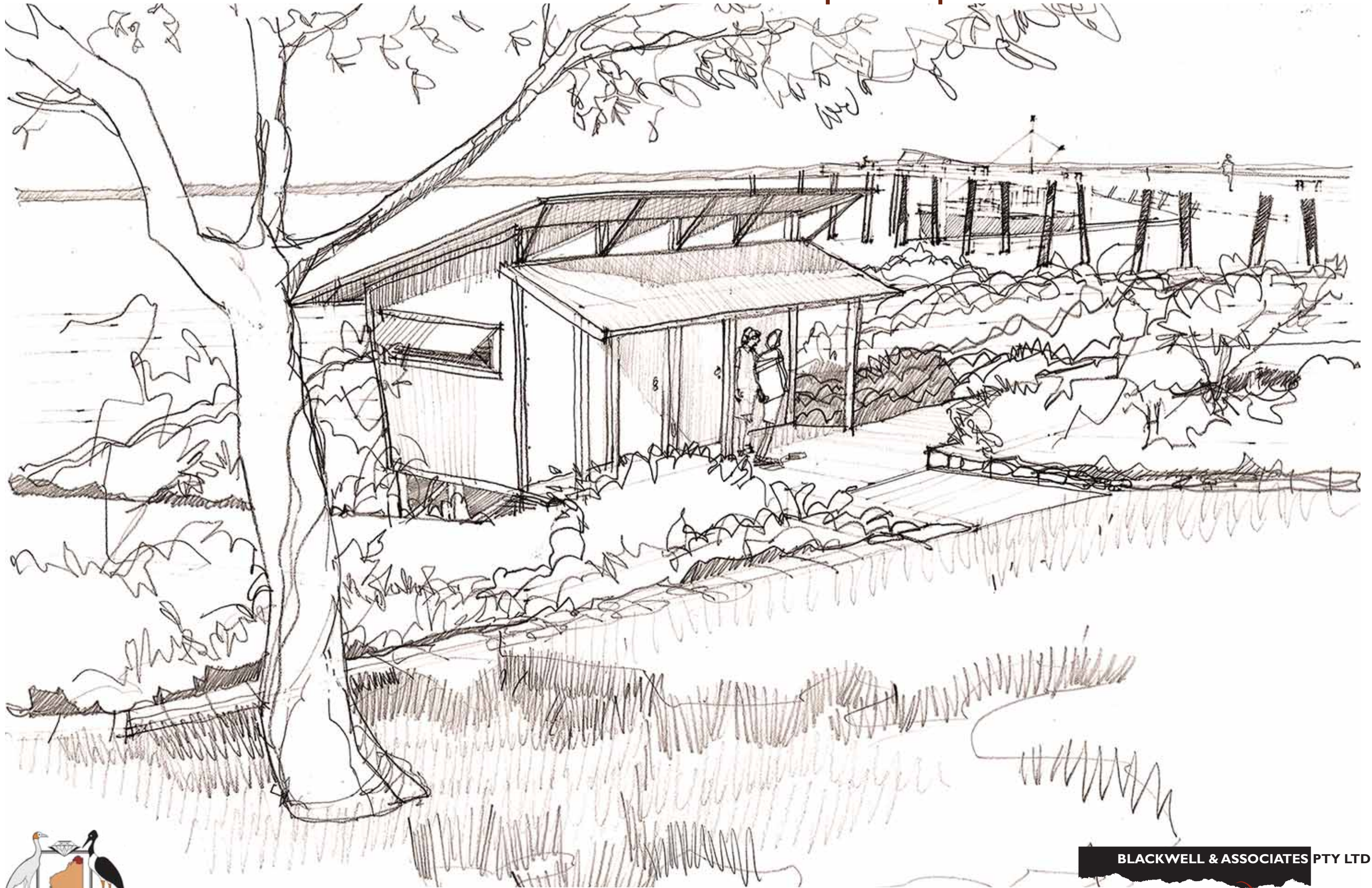
ANTHON'S LANDING-LANDSCAPE CONCEPT

BLACKWELL & ASSOCIATES PTY LTD

Landscape Architects • Urban Designers



boardwalk, toilets & lawn area perspective



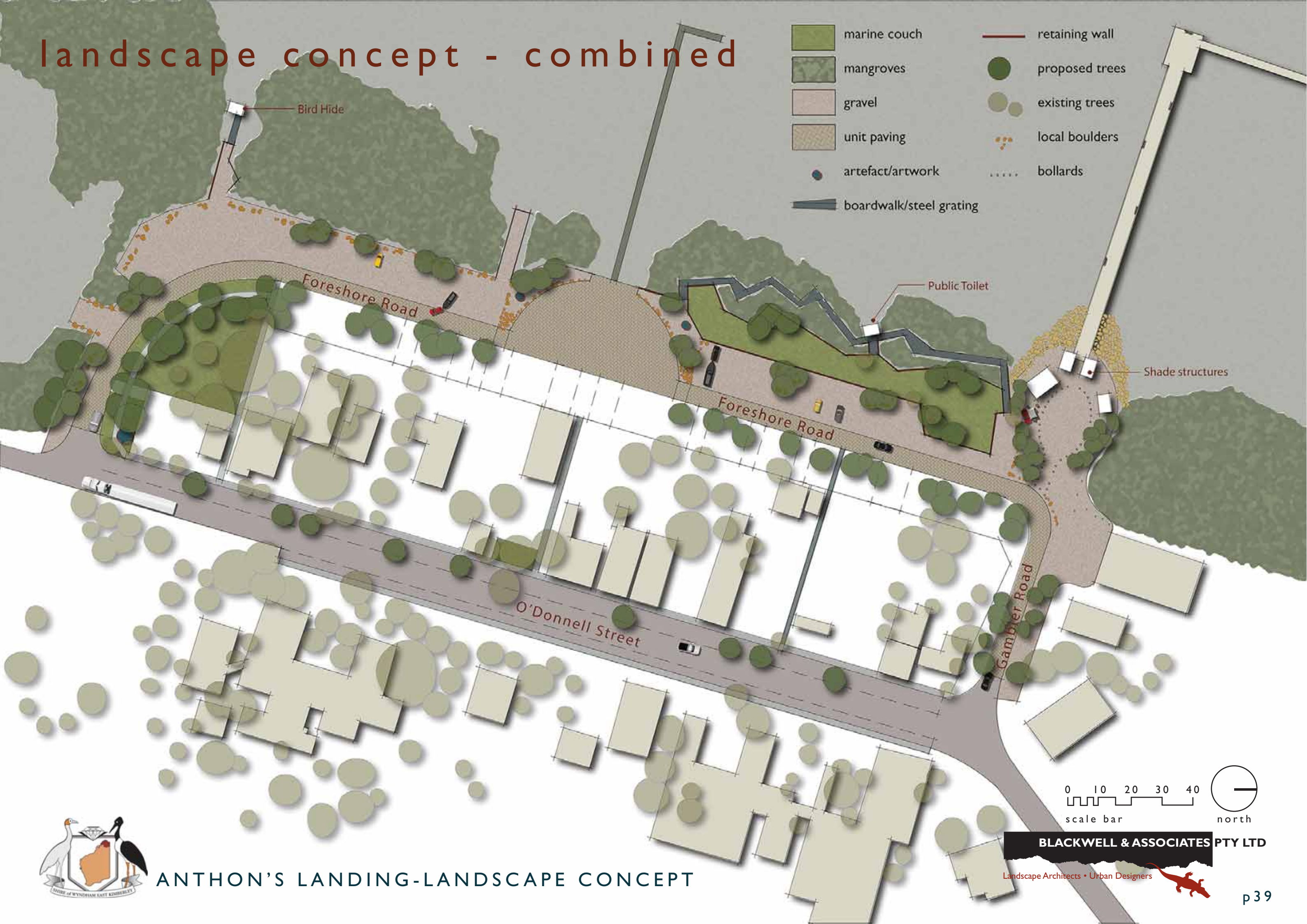
ANTHON'S LANDING-LANDSCAPE CONCEPT

BLACKWELL & ASSOCIATES PTY LTD

Landscape Architects • Urban Designers



landscape concept - combined



- marine couch
- mangroves
- gravel
- unit paving
- artefact/artwork
- boardwalk/steel grating
- retaining wall
- proposed trees
- existing trees
- local boulders
- bollards



ANTHON'S LANDING-LANDSCAPE CONCEPT

0 10 20 30 40
scale bar

north

BLACKWELL & ASSOCIATES PTY LTD
Landscape Architects • Urban Designers

appendix

Individual community members, government departments & other organisations Blackwell & Associates have been in contact with:

- Heritage Council of Western Australia (Eddie Marcus)
- Department of Transport (Donna West)
- Western Australian Maritime Museum
- Wyndham Foreshore Police Station (Adam Conwall & Brad Warburton)
- Oombulgurri Aboriginal Community Administrator (Barry Jameson)
- Wundargoodie Aboriginal Safaris (Maria Morgan)
- True North Cruises
- Returned Services League (Dick Daniels)
- Parry Creek Farm (Anne Jongedyk)
- Gouldian finch Research Centre
- Local Property Owners (Paul Cavanagh, Chris Daniel & Catherine Atkins)
- Barge owner (Barry Weir)

